

## DUAL STAGE LAKE/PUMP FILTER

The RainPro Lake/Pump Filters are dual staged with both an outer and inner filter designed for use on the intake side of a pump that is typically drawing from a pond or lake. These Lake/Pump Filters are easily matched to the Flow requirements of any application with the unique 2" male spigot connections on each end for easy manifolding using standard 2" slip PVC fittings or Union connections. The PON-006, 6" diameter unit is designed for 0 to 40 gallon per minute flow and the PON-012, 12" diameter unit is designed for 0 to 80 gallons per minute flow. The size and quantity of filters required is dependent on desired flows. The RainPro Lake/Pump Filters are manufactured of Heavy Duty PVC top and bottoms with rigid molded PVC inner and outer filtration walls. The hardware is all Stainless Steel.

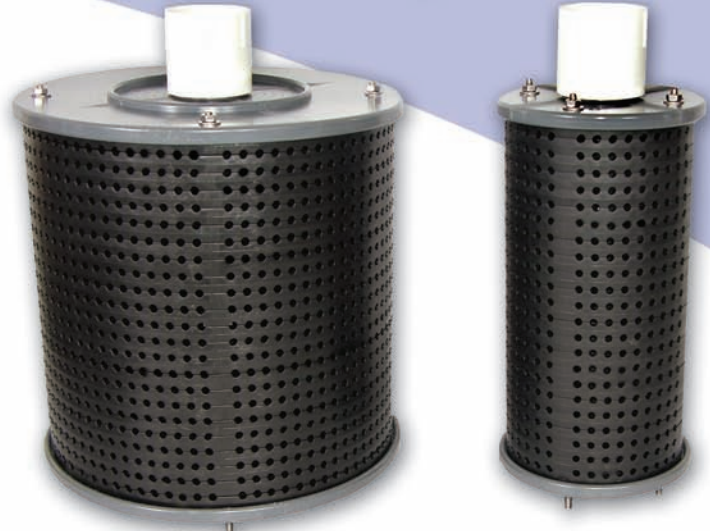
The PON-006 has a 6" outer molded filter screen with exactly 38.8 square inches of total open area and an inner 2" molded diameter filter screen with exactly 21.6 square inches of total open area. The PON-006 is rated for 0 to 40 GPM in clean water.

The PON-012 has a 12" outer molded filter screen with exactly 82.0 square inches of total open area and an inner 6" molded diameter filter screen with 38.8 square inches of total open area. The PON-012 is rated for 0 to 80 GPM in clean water.

With the relatively large surface intake area, the velocities remain low, minimizing the suction of unwanted debris from the surrounding area.

At the site, the Filters are typically semi disassembled, filled with 3/8" or larger, irregular shaped pea gravel, reassembled and placed in the pond or lake, connected to the pump intake pipe. The size (and number of units) chosen is based on desired flows and the amount of debris to be dealt with. An exclusive feature of the RainPro model is the ability to easily and cost effectively connect multiple Filters in Series or Parallel utilizing the Standard 2" pipe size spigot connection(s) with standard 2" PVC fittings or Unions to match pump capacity.

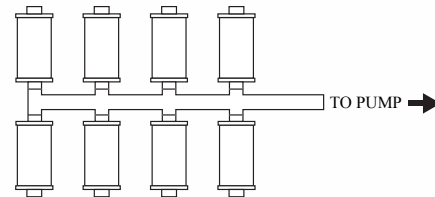
Model #	Overall Diameter	Overall Height
PON-012	12.50in	14.50in
PON-012	31.75mm	36.83mm
PON-006	6.50in	14.50in
PON-006	16.51mm	36.83mm



PON-012

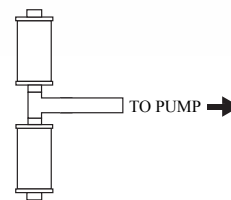
PON-006

### Popular Configuration Of PON-012 Lake/Pump Filters

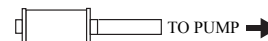


0-640 GPM

Each Pon-012 filter added to system equates to an additional 80 GPM capacity. Centerline pipe must be sized to maximum flow desired.



0-160 GPM



0-80 GPM

All connections to filter use standard 2" slip PVC fittings, including; tees, ells, couplings, male or female threaded adapters, unions etc... This filter system provides you the most flexibility and cost effective means of assembling the filter design that meets your system requirements. Each filter includes 2" slip PVC Schedule 40 threaded female adapter and a 2" slip PVC Schedule 40 cap.